

SEAL

OWNER

CONSULTANT

CONSULTANT

ARCHITECT

**BARRY SEITZ & ASSOCIATES, INC.**  
 Consulting Engineers & Surveyors  
 1000 N. Highway 16, 1601-0142  
 P.O. Box 1000  
 01028-0004 www.barryseitz.com

**ARCHITECTURAL CONCEPTS LLP**  
 Architecture • Planning • Interiors • Engineering  
 The Colonial Mallway at Oakdale Corporate Center  
 658 West Lincoln Highway • East, Parsippany, NJ 07654  
 Phone: 973.261.1000  
 Email: [info@architecturalconcepts.com](mailto:info@architecturalconcepts.com)  
[www.architecturalconcepts.com](http://www.architecturalconcepts.com)

Thomas A. Woodhouse, Jr., AIA  
 James L. Cherry II, AIA

PROJECT

**THE FAVORITES AT TOMS RIVER**

BANANIER DRIVE  
 DOVER TOWNSHIP  
 OCEAN COUNTY  
 TOMS RIVER, NJ 08755

REVISIONS

No.	Date	Revision
09-23-06	ISSUED FOR BIDDING	
06-04-07	ISSUED FOR RE-BIDDING	
06-01-07	ISSUED FOR RE-BIDDING	
09-21-07	ISSUED FOR CONSTRUCTION	

Sheet Title:  
**FIRE PROTECTION DEMOLITION PLAN**

Issue Date: 30 APRIL 2007

Issue Project: REISSUED FOR BIDDING

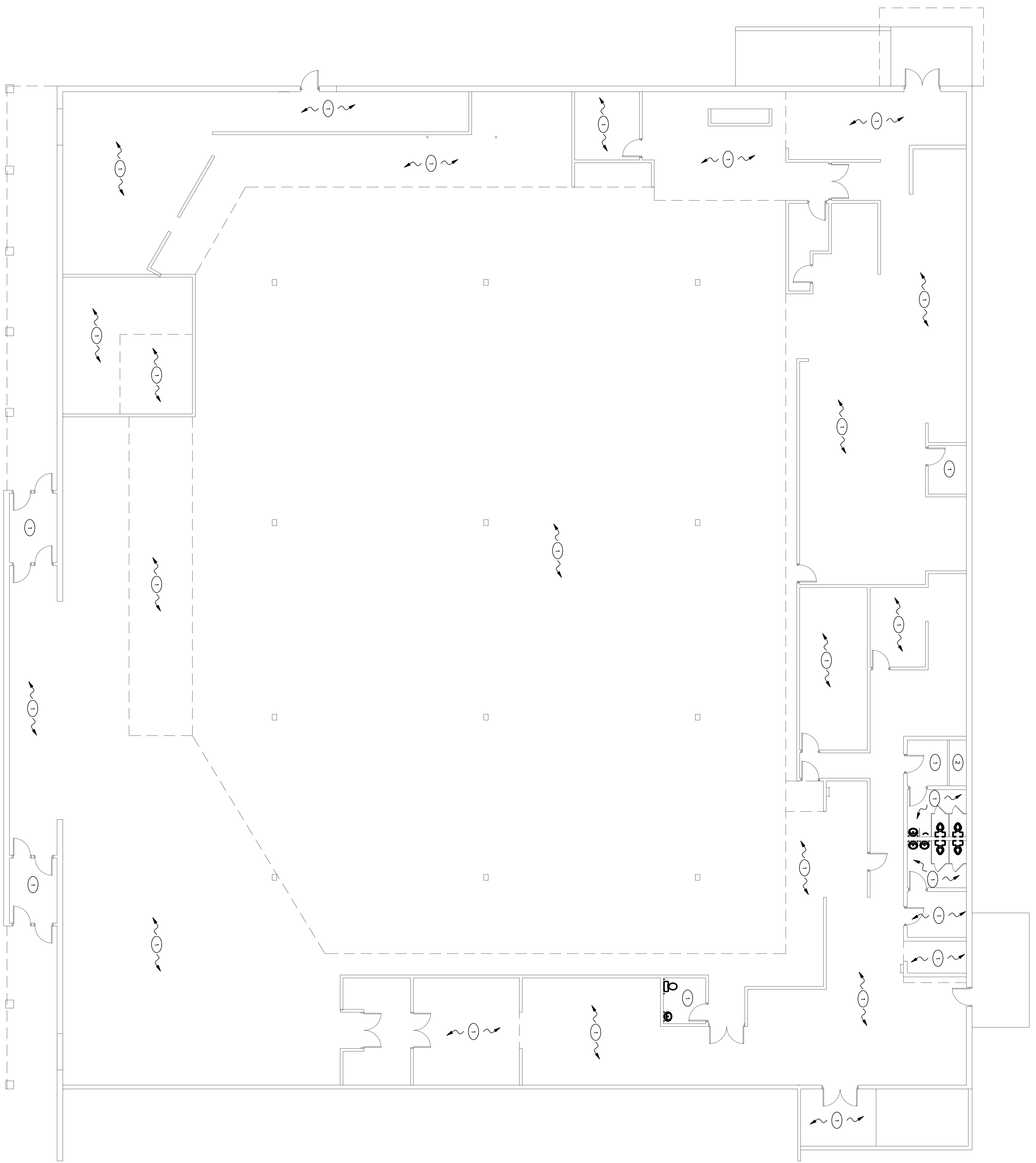
Issue Scale: AS NOTED

Drawing Title: FIRE PROTECTION DEMOLITION PLAN

Project No.: 114306

Sheet No.: 02 of 03

- NOTES BY SYMBOL:** (THIS DRAWING ONLY)
- ① DISCONNECT AND REMOVE EXISTING SPRINKLERS, RELATED PIPING, PRESS. AND ALL RELATED SUPPORTS, AND TRIM, CAP PIPING AT BRANCH MAINS, CROSS MAINS AND BRANCH MAINS MAY BE REUSED.
  - ② EXISTING WET PIPE SPRINKLER RISER TO REMAIN, TEST AND VERIFY ALL RISER ALARM DEVICES ARE IN WORKING ORDER PER NFPA 13.



**DEMOLITION PLAN - FIRE PROTECTION**  
 SCALE: 1/8" = 1'-0"