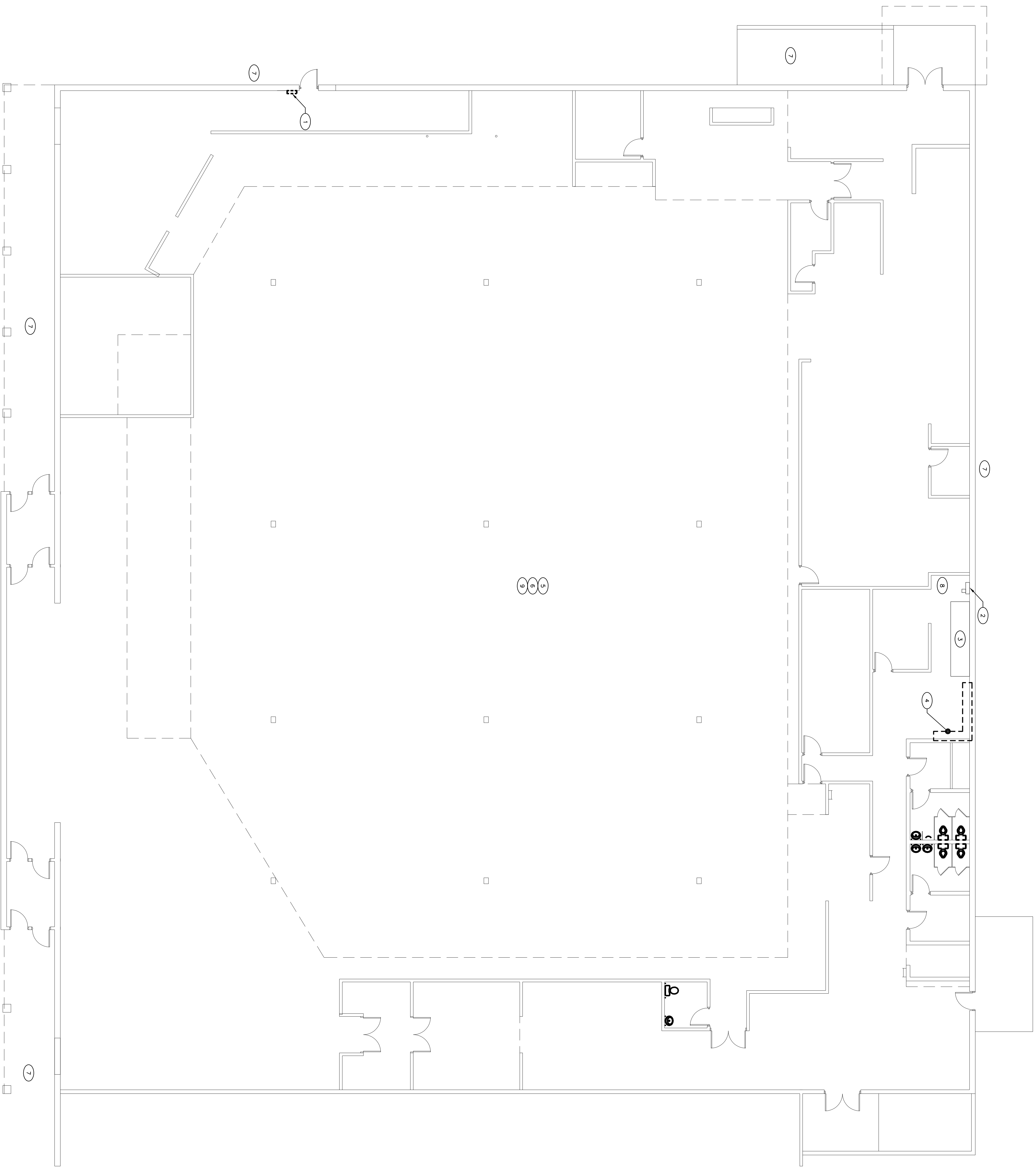


GENERAL ELECTRICAL DEMOLITION NOTES

1. THE DEMOLITION PLAN AS SHOWN IS NOT TO BE CONSIDERED ALL INCLUSIVE BUT IS TO BE A GENERAL GUIDE TO THE SCOPE OF THE DEMOLITION. ALL WORK SHALL BE ACCORDING TO THE NEW CONSTRUCTION WORK CAN BE ACCOMPLISHED AS SHOWN ON THESE CONSTRUCTION DOCUMENTS.
2. REMOVAL OF ALL EXISTING ELECTRICAL EQUIPMENT AND ASSOCIATED CONDUIT SHALL BE COORDINATED WITH NEW WORK INSTALLATION.
3. AT EQUIPMENT / DRIVES / LIGHTING FIXTURES BEING REMOVED, ABANDON CONDUIT AND BOXES IN BLACK WALLS TO REMAIN. REMOVE ALL WIRE AND REMAIN IN BLACK WALL WITH BLANK COVER PLATES. COVER ALL BOXES TO REMAIN IN BLACK WALL WITH BLANK COVER PLATES. COVER ALL BOXES TO REMAIN IN BLACK WALL WITH BLANK COVER PLATES. COVER ALL BOXES TO REMAIN IN BLACK WALL WITH BLANK COVER PLATES.
4. THE CONTRACTOR WILL BE HELD RESPONSIBLE FOR ANY/ALL DAMAGES TO EXISTING FLOORS, FLOOR TILES, WALLS, CEILING, FINISHINGS, ETC. DUE TO THE REMOVAL PROCESS OF ELECTRICAL EQUIPMENT AND ALL ASSOCIATED WIRING.
5. ALL WASTE, AND EQUIPMENT REMOVED SHALL BE PROPERLY DISPOSED OF BY THE CONTRACTOR.
6. DISCONNECT AND REMOVE ALL SWITCHES, RECEPTACLES, ETC. FROM WALLS BEING REMOVED. ENSURE THAT ALL ADJACENT DEVICES REMAINING ARE ENERGIZED.
7. CONTRACTOR SHALL REMOVE ALL EXISTING LIGHTING FIXTURES, BOXES, WIRING, BACK TO EXISTING CONDUITS FROM WALLS ON CEILING BEING REMOVED.
8. REMOVE EXISTING FIRE ALARM SYSTEM IN ITS ENTIRETY.

DEMOLITION NOTES BY SYMBOL: (7)

- (THIS DRAWING ONLY)
1. DISCONNECT AND REMOVE BRANCH PANEL BACK TO SOURCE.
 2. EXISTING WIRING/REBAR TO REMAIN.
 3. EXISTING SWITCHBOARD TO REMAIN. REMOVE ALL EXISTING CIRCUIT BREAKERS WORK. DEMONSTRATE AS REQUIRED FOR DEMOLITION.
 4. DISCONNECT AND REMOVE ALL BRANCH PANELBOARDS IN ELECTRICAL ROOM BACK TO SOURCE.
 5. DISCONNECT AND REMOVE ALL LIGHTING IN BUILDING BACK TO SOURCE.
 6. DISCONNECT AND REMOVE ALL RECEPTACLES AND TELEPHONE/DATA DEVICES FROM WALLS TO REMAIN.
 7. DISCONNECT AND REMOVE ALL EXTERIOR LIGHTING BACK TO SOURCE.
 8. DISCONNECT AND REMOVE EXISTING TELEPHONE AND CABLE TV EQUIPMENT. DUCTILE EXISTING CONDUITS FOR NEW SERVICES.
 9. DISCONNECT AND REMOVE ALL POWER FEEDS TO EXISTING PLUMBING AND HVAC EQUIPMENT IN BUILDING BACK TO SOURCE.



ELECTRICAL DEMOLITION PLAN
SCALE: 1/8" = 1'-0"

SEAL

OWNER

CONSULTANT

CONSULTANT

ARCHITECT

BARRETT & ASSOCIATES, INC.
Consulting Engineers & Surveyors
1000 N. 1st St., Suite 100
Toms River, NJ 08753
810 298 0024 www.barrett.com

ARCHITECTURAL CONCEPTS LLP
Architecture • Planning • Interiors • Engineering
The Colonial Mall at Ocean County Center
628 West Lincoln Highway • Eatons Park Building 13041
Toms River, NJ 08753
Phone: 810 298 0024
Email: archconcepts@archconcepts.com
www.archconcepts.com

PROJECT

THE FAVORITES AT TOMS RIVER

BANANIER DRIVE
DOVER TOWNSHIP
OCEAN COUNTY
TOMS RIVER, NJ 08755

REVISIONS

No.	Date	Revision
01	09-23-06	ISSUED FOR BIDDING
02	05-04-07	ISSUED FOR RE-BIDDING
03	06-01-07	ISSUED FOR RE-BIDDING
04	09-21-07	ISSUED FOR CONSTRUCTION

ELECTRICAL DEMOLITION PLAN

Drawn By: **DMK**
Reviewed By: **JACORBP**
Project: **114306**
Drawing No.:

E1.1